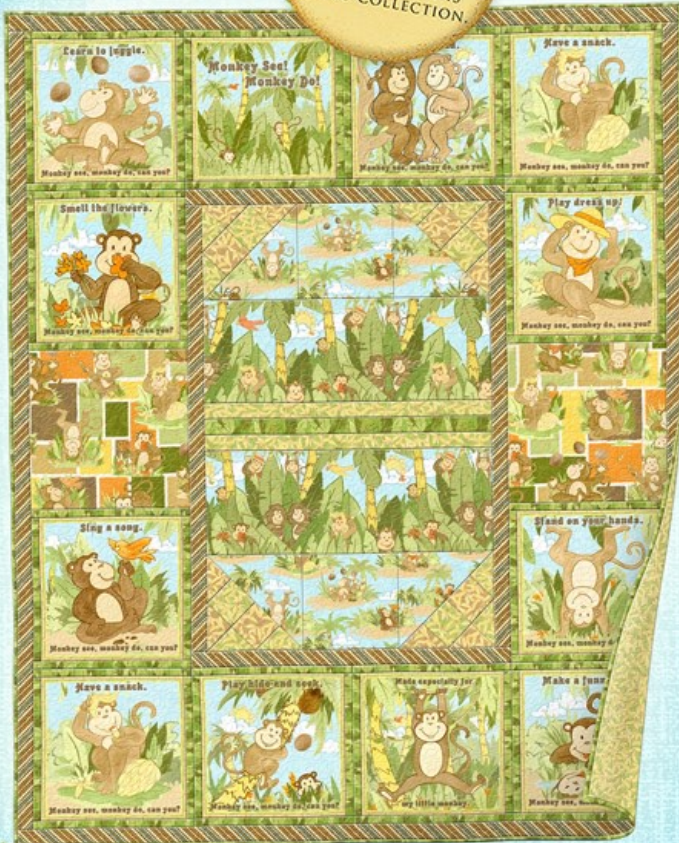


Q1418

by Jerianne Van Dijk

# MONKEY GAMES

FREE  
PATTERN  
OFFERED  
IN INDEPENDENT  
QUILT SHOPS TO  
COMPLEMENT THIS  
FABRIC COLLECTION.



Finished Nap Quilt Size: 42" x 52"



Fabric A  
61536-272  
1 Panel (30")

Fabric B  
61537-471  
2/3 yard



Fabric C  
61538-427  
3/8 yard

Fabric D  
61539-872  
1/2 yard



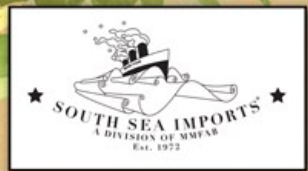
Fabric E  
61540-252  
1/4 yard

Fabric F  
61540-752  
1/4 yard (piecing)  
3 yards (backing)



Fabric G  
61541-777  
1 1/8 yards

Fabric H  
61542-254  
1/2 yard



# Monkey Games

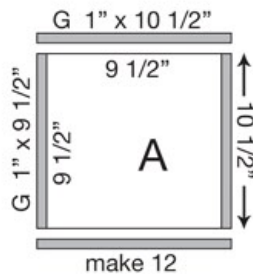
**Please read all instructions carefully before starting. All instructions include a 1/4" seam allowance and strips are cut from selvage to selvage unless otherwise stated.**

## 1. Cut the following:

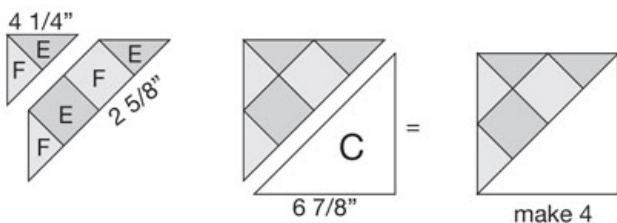
- Fabric A** - \*\*cut 12 - 9 1/2" x 9 1/2" squares (center designs evenly)
- Fabric B** - cut lengthwise 2 - 7" x 18 1/2"
- Fabric C** - cut 2 - 6 7/8" x 6 7/8" squares, cut in half diagonally for 4 triangles (1-□, 1-□)  
cut 2 - 6 1/2" x 6 1/2" squares
- Fabric D** - cut 2 - 10 1/2" x 10 1/2" squares
- Fabric E** - cut 2 - 4 1/4" x 4 1/4" squares, cut in half diagonally from both directions for 8 triangles □
- cut 4 - 2 5/8" x 2 5/8" squares
- Fabric F** - cut 1 - 1 1/2" strip, subcut 2 - 1 1/2" x 18 1/2"  
cut 2 - 4 1/4" x 4 1/4" squares, cut in half diagonally from both directions for 8 triangles □
- cut 4 - 2 5/8" x 2 5/8" squares
- Fabric G** - \*\*cut 14 - 1" strips, subcut 24 - 1" x 9 1/2" and 24 - 1" x 10 1/2"  
cut 1 - 1 1/2" x 18 1/2"
- BINDING** - cut 6 - 2 1/4" strips, sew end to end and press in half
- Fabric H** - cut 8 - 1 1/2" strips, sew end to end for 1 long strip then subcut the following borders:  
2 - 1 1/2" x 28 1/2"  
2 - 1 1/2" x 20 1/2"  
2 - 1 1/2" x 50 1/2"  
2 - 1 1/2" x 42 1/2"

## 2. Piecing Order:

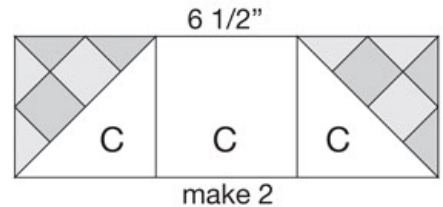
1. Sew **G** 1" borders around 12 **A** 9 1/2" squares, **SIDES** first, then **TOP** and **BOTTOM** borders. \*\* (If **A** measurements are slightly different, cut **G** borders slightly larger, sew around **A** squares, then trim all blocks to measure 10 1/2" x 10 1/2".)



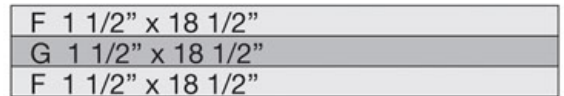
2. Make 4 - 6" finished (6 1/2" unf.) pieced blocks by sewing **F** and **E** squares and triangles together by rows according to the diagram. Then, add **C** 6 7/8" triangles.



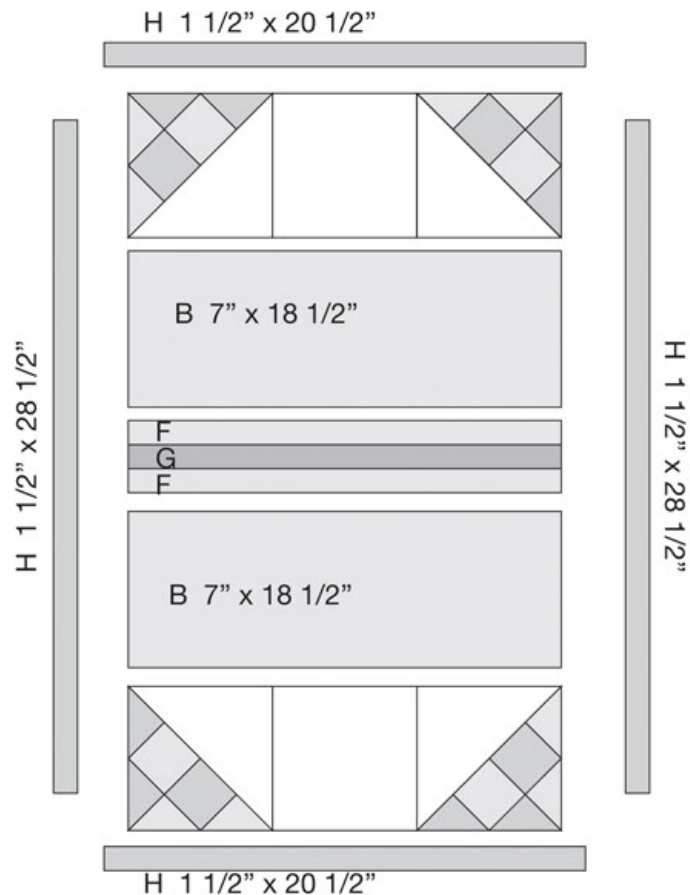
Next, sew top and bottom rows of the quilt's center, each consisting of 2 pieced blocks and one **C** 6 1/2" square. **Fabric C** is directional so pay attention to the orientation of the pieced blocks according to the cover picture.



3. Sew **F**, **G** and **F** 1 1/2" x 18 1/2" strips side by side.

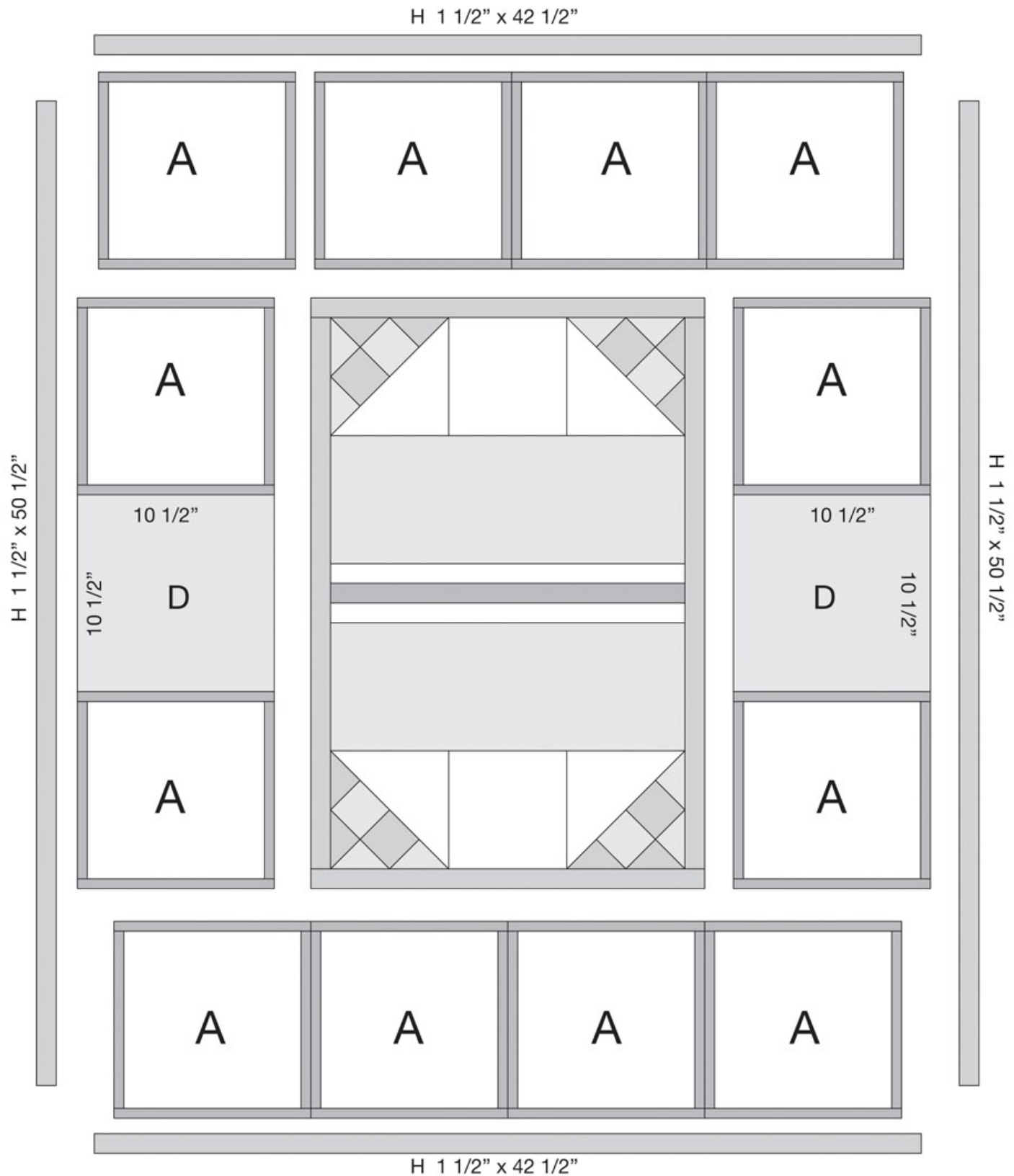


4. Sew quilt center together alternating pieced rows, two **B** 7" x 18 1/2" and **F/G/F** strip set together according to the diagram. Then, sew **H** 1 1/2" borders around the center, **SIDES** first, then **TOP** and **BOTTOM** borders.



5. Sew two **A** blocks and one **D** 10 1/2" square together for both **SIDE** borders. Sew four **A** blocks together for the **TOP** and **BOTTOM** borders according to the diagram. Sew **SIDE** borders to the quilt first, then sew **TOP** and **BOTTOM** borders.

6. Sew **H** 1 1/2" borders around the quilt, **SIDES** first, then **TOP** and **BOTTOM** borders.



7. The quilt measures approximately 42 1/2" x 52 1/2". Make backing (**Fabric F**) at least 6" larger than the top. Layer and baste top, batting and backing together. Quilt as desired. Attach binding (**Fabric G**) and enjoy!!